



a division of ADS Corporation

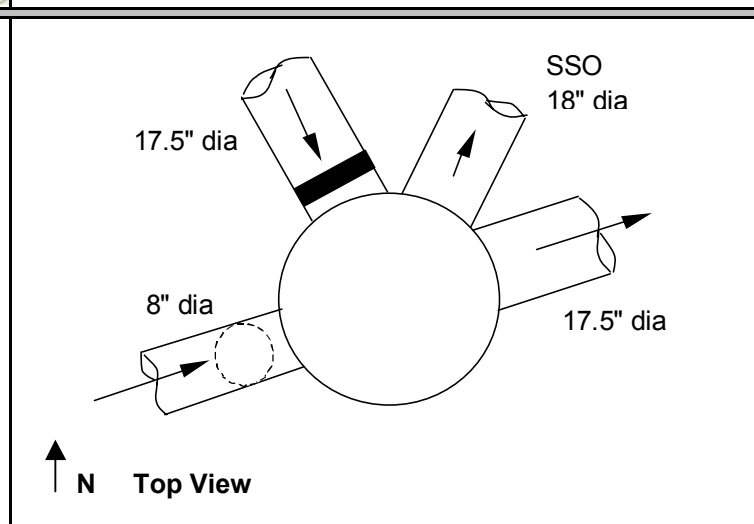
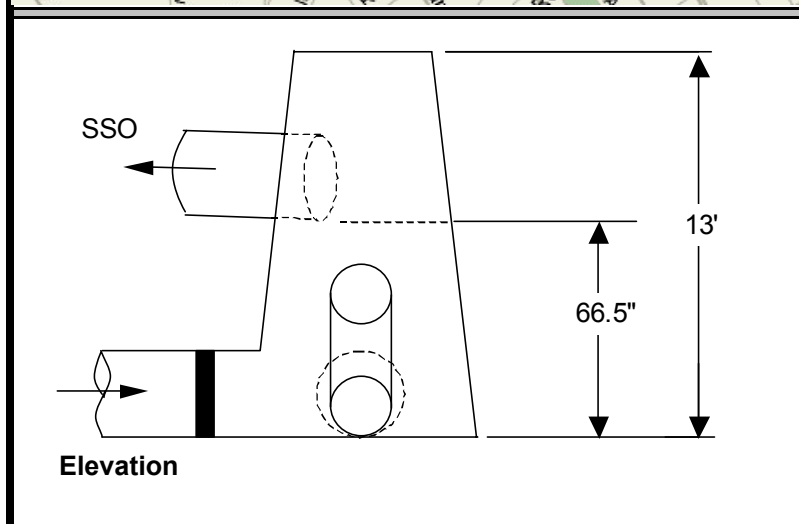
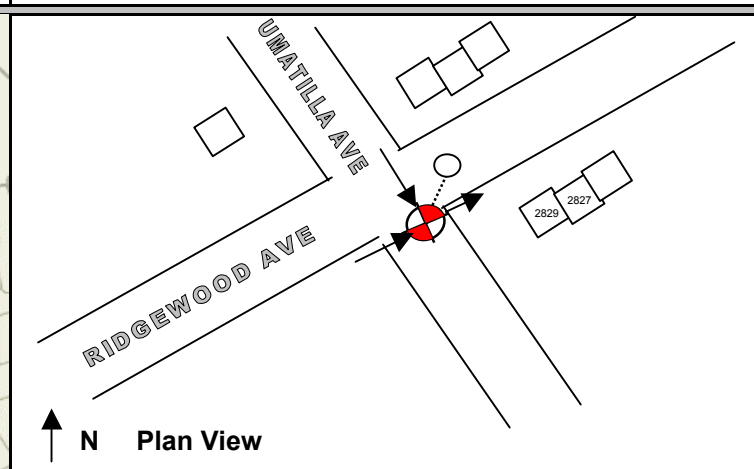
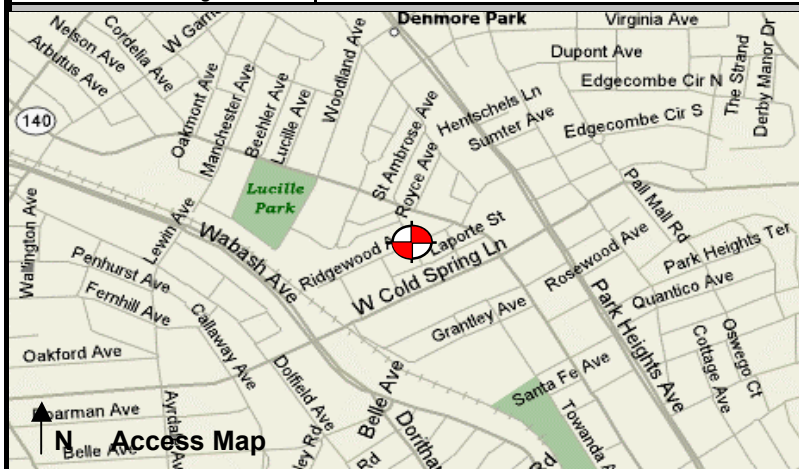
Baltimore SSO

Site Investigation Report

FM Initials: DF

Project: 10 Gwynns Run System Improvements

Site Name:	10_56S	Monitor Series:	4000 WR	Monitor S/N:		Manhole #:		Investigation Information: Upstream Input: (L/S, P/S) DNI Upstream Manhole: Downstream Manhole: Depth of Flow: 2.5" + - .5 Description of Site Hydraulics: Moderate Turbulence Influent & Effluent
Address / Location:	2829 Ridgewood Ave.	Map Page #:		Map Grid #:				
		Pipe Height:	17.5"	Pipe Width:	17.5"			
Access:	Drive	IP Address:	CDPD					
		GPS Coords:	N DD.dddd 39 20.350		W DD.dddd 076 40.242			
Date/Time of Investigation:	2/4/2005 11:15							



Manhole Information:	
Manhole Depth:	13'
Manhole Material / Condition:	Coated / Good
Active Drop Connections?	Yes
System Character:	
<input checked="" type="checkbox"/>	Residential
<input type="checkbox"/>	Commercial
<input type="checkbox"/>	Industrial
Notes:	18-in. Influent & Effluent pipes are lined.
Legend:	
	Cast Iron Flap Valve
	Sensor Location
N.T.S.- Not to scale	

The monitoring period ended as of December 31, 2007.